

HOW TO:

align colours

with Motorised Dichroic Filters

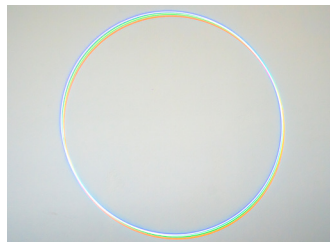


All Kvant Spectrum laser systems can be improved by Motorised Dichroic Filters for quick and easy colour alignment. The alignment can be done either from FB4 interface or via Beyond laser control software.

1. Adjusting colours directly from FB4 interface



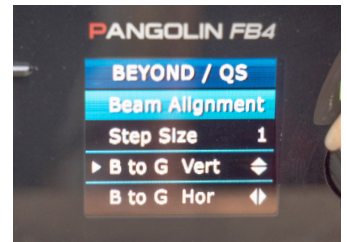
A: Power up the system as standard.



B: Create a full-size white circle (static tunnel effect).



C: Find Beam Alignment option in the menu and enter it by pressing the rotary knob.



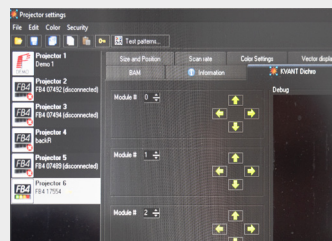
D: Here you can set the STEP SIZE (amount of movement in a single step), and VERTICAL / HORIZONTAL movement for every colour in your projector (R=RED, G=GREEN, B=BLUE, Y=YELLOW).

2. Adjusting colours from Beyond software

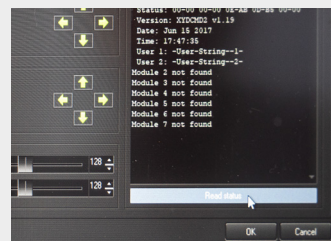
Beyond automatically identifies Motorised Dichroic Filters when the laser projector is connected (and powered up) to the PC via Ethernet.



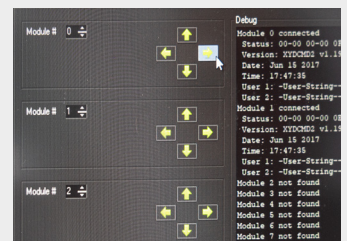
A: Power up the system as standard and create a full-size white circle (static tunnel effect).



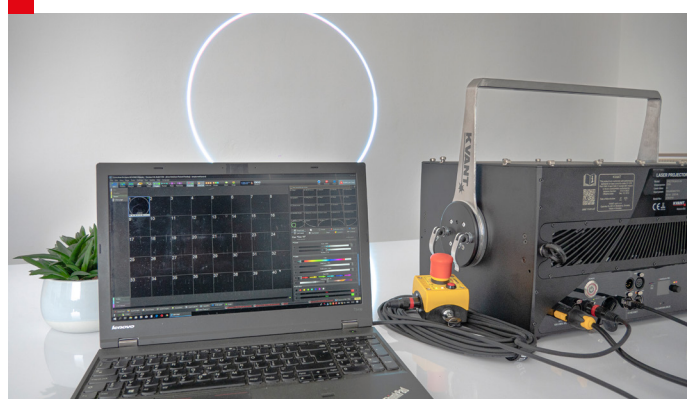
B: Go to: PROJECTOR SETTINGS -> KVANT DICHRO tab. There you will find all the information and control options for the dichroic filters.



C: To start the beam alignment, press the READ STATUS button.



D: Start with the first dichroic filter (laser module1) and/or any other as necessary. Use the arrows associated with each module to move the beam to the desired position.



When the alignment procedure is successful, you will see all the colours nicely overlaying each other, resulting in an even, bright and sharp white circle.